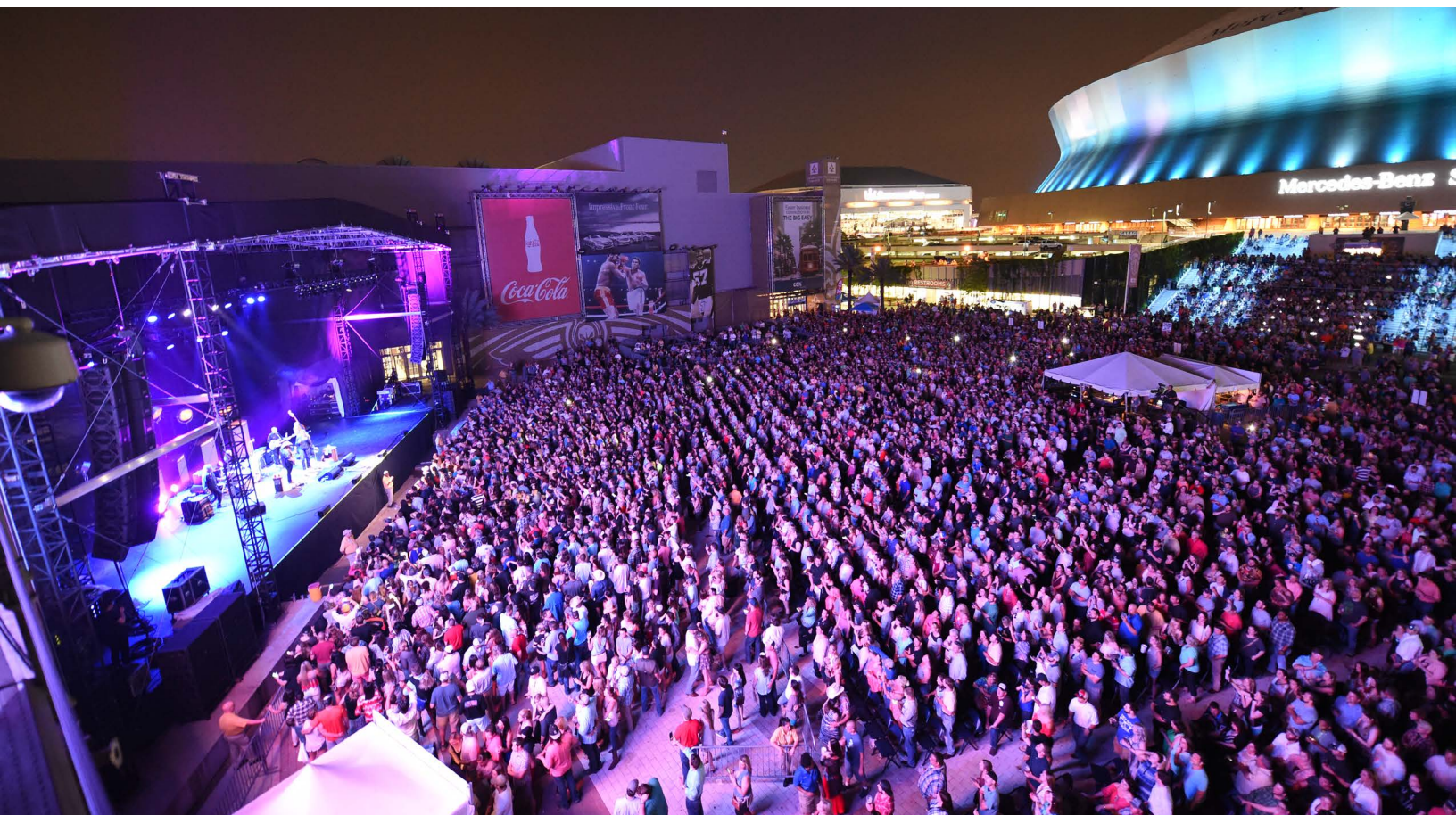


CHAMPIONS SQUARE PROMOTER PACKET



World leaders in entertainment.



Champions Square | P.O. Box 52439 | New Orleans, LA 70152

www.champions-square.com

www.champions-square.com



WELCOME TO CHAMPIONS SQUARE

Since debuting in August 2010, Champions Square has quickly become the preferred outdoor location in New Orleans for concerts, tailgating activities, festivals and special events. With its close proximity to many area hotels and businesses, abundant on-site parking, permanent restroom facilities, experienced and dedicated staff, and an upscale, distinctive design, Champions Square stands out amongst the notable outdoor spaces in downtown New Orleans. Champions Square comes equipped with a professional grade stage and rigging grid, ample power for all of your production needs, as well as fan enhancements including a large LED video screen and eight smaller LED screens for logos and images. The extensive back of house area includes space for tour production offices, headliner dressing room equipped with a private restroom, 6 additional dressing rooms and showers.

In addition, just steps off the Square, you will find club XLIV & Encore, the perfect location for VIP accommodations and catering areas. Located in the heart of the Square with close and private access to the stage, club XLIV features built-in amenities including modern furnishings, illuminated bars, specialty lighting and audio/video. Connected to club XLIV by impressive, oversized sliding doors, Encore greatly expands your back-of-house or VIP space, offering room for offices, crew catering services or up to 1,000 standing guests. These spaces are extremely versatile and can be modified to suit the needs of your event. Opening Act at Champions Square is our newest destination, featuring 12,000 square feet of public space for eating, drinking and lounging with friends, all while enjoying sports action from around the country on 31 flat screen TVs.

Champions Square — the ideal location for your next event!



|||||

CONTACT INFO



VENUE GENERAL MANAGER

Zane Collings
(504) 587-3892
zane.collings@asmneworleans.com

ASST. GENERAL MANAGER

Mike Schilling
(504) 587-3875
mike.schilling@asmneworleans.com

BOX OFFICE MANAGER

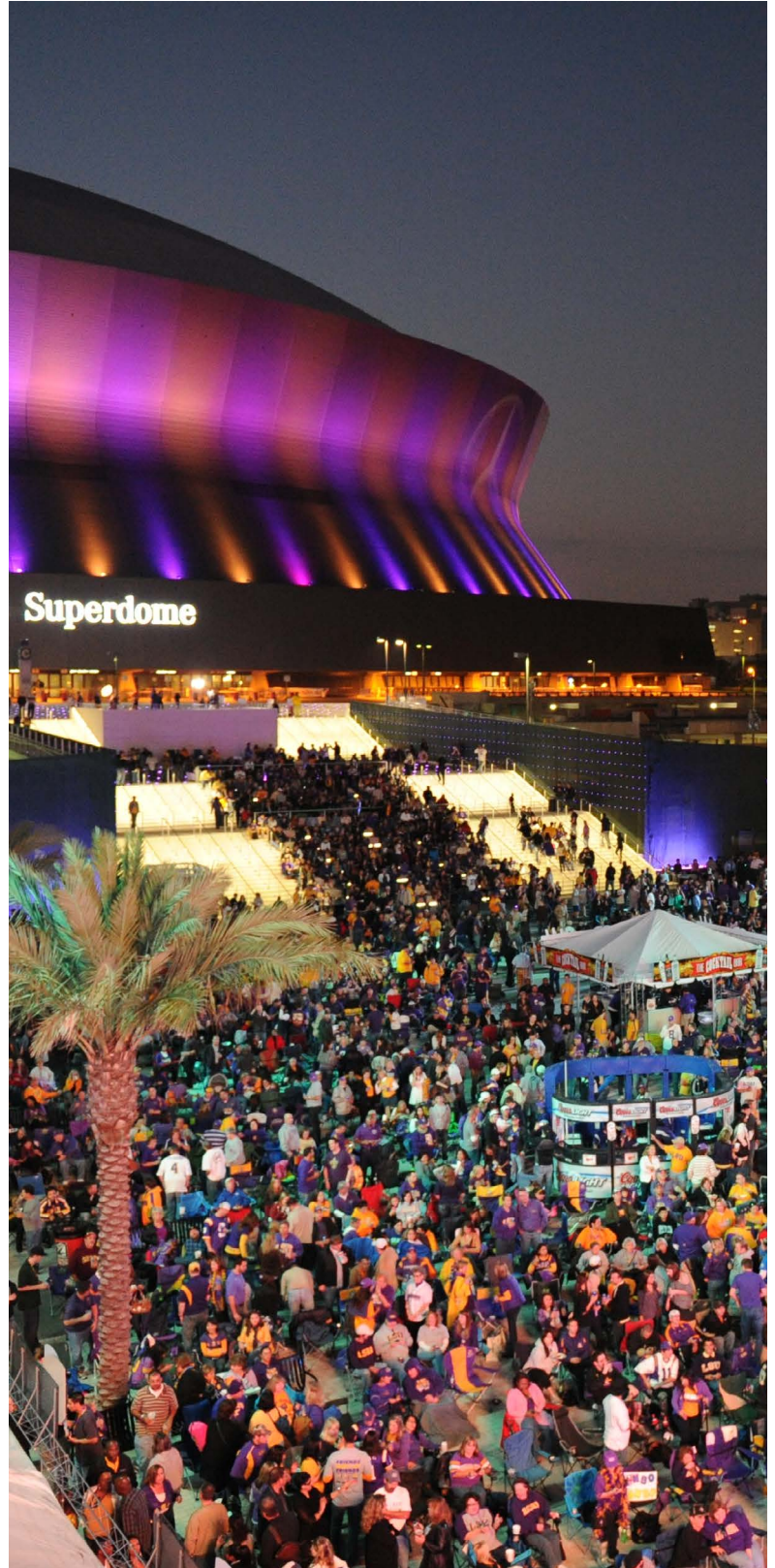
Mark Arata
(504) 587-3850
mark.arata@asmneworleans.com

**DIRECTOR OF EVENT SERVICES
& PUBLIC SAFETY**

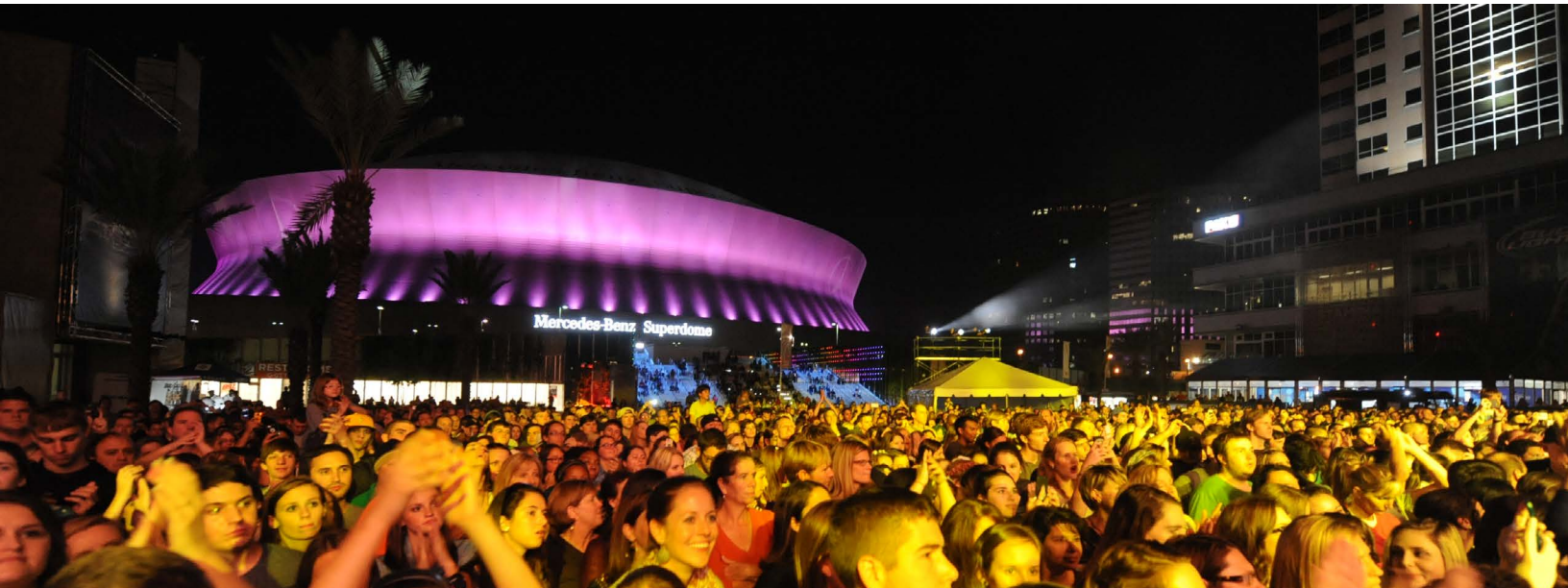
Farrow Bouton
(504) 587-3838
farrow.bouton@asmneworleans.com

**CENTERPLATE GENERAL MANAGER
(CONCESSIONS & CATERING)**

Kernell Jupiter
(504) 558-6280
kernell.jupiter@centerplate.com



VENUE INFO



CURFEW

- 10:30pm Sunday - Thursday
- 11:00pm Friday & Saturday

SOUND LIMIT

- 105 C-Weighted DB at FOH

TOTAL SPACE

- Square: 45,435 sq. ft.
- Square with LaSalle St.: 89,870 sq. ft.
- Capacity: Varies depending on set-up

STAGE/ROOF

- Stage: 60 ft. wide x 48 ft. deep x 6 ft. high
- Wings: 16 ft. wide x 27 ft. deep wings on stage left and stage right
- Stage to Steel: 32 ft. on the corners of main grid, 35 ft. at the center of main grid, 31 ft. in audio bays, includes rear & side walls
- Roof: 65 ft. wide x 48 ft. deep main grid with 19 ft. wide x 17 ft. deep audio bays
- Rigging capacity: 48,000 lbs. from main grid and 10,000 lbs. from each audio bay, totaling 68,000 lbs.
- Staging Roof is not equipped with sound or lighting system

STAGE POWER

- Up stage left:
 - 200 Amp; 3 Phase
 - 200 Amp; 3 Phase
 - 200 Amp; 3 Phase
- Up stage right:
 - 200 Amp; 3 Phase
 - 200 Amp; 3 Phase
 - 400 Amp; 3 Phase

A/V, TECHNOLOGY & PRODUCTION

- 32 ft. wide x 18 ft. high, 15 mm LED video screen
- On-site video control room with 16 input HD/SD switcher
- 2 Ikgami HL45 cameras & 1 Vinten tripod
- Wireless microphones and communications systems
- Background audio system with 24 full range speakers and 10 subwoofers in Champions Square and 18 speakers located along LaSalle St. and the Mercedes-Benz Superdome Grand Staircase

- Mix position: Distance from downstage edge 105' - 120' size: 20' x 20'
- Panasonic SDI switcher
- Yamaha audio mixer
- Limited audio & P.A. systems are available
- Audio reinforcement will be required for live entertainment

LIGHTING

- 40 LED general area wash fixtures throughout Champions Square
- No stage lights provided - Client must provide all stage lighting (may be rigged from stage roof; equipment weight restrictions will apply)

LOAD IN / LOAD OUT AREA

- 2 trucks at dock in tunnel - upstage 50' push
- Multiple trucks ground load downstage
- Upon unloading trucks must clear the loading zone
- Truck parking in Lot 3 or other designated location
- Roll door at rear of stage is 10 ft. high and 8 ft. wide

VENUE INFO



CAPACITIES

- Fixed Seating: 4,500
- General Admission (max): 7,000
- Special Event Seating: TBD based on Event configuration

BACK OF HOUSE

- One Headliner dressing room equipped with private restroom
- Six dressing rooms
- One private restroom with shower
- One shared restroom with shower
- No washer & dryer on site
- High speed internet available

RESTROOMS

- Permanent public restrooms under the North and South LaSalle St. Ramps
- Total Men's Facilities: 20
- Total Women's Facilities: 18

FOOD & BEVERAGE / MERCH

- ASM Global retains the sole right to sell all food, beverage and merchandise in the Square
- Promoter may utilize caterer of choice for BOH services with the exception of alcohol

PUBLIC PARKING

- On site parking available

SHOW BUS PARKING

- Space for 3 Commercial buses located in backstage tunnel
- Overflow parking available in Lot 3 or other designated location
- Shore power consists of three 50 Amp services

TICKETING

- Day of event ticket sales are conveniently located at the Box Offices at Poydras & LaSalle St. and Girod & LaSalle St.
- Tickets can be purchased at www.ticketmaster.com, all Ticketmaster Outlets, the Smoothie King Center Box Office, the Champions Square Event Day Box Office on event days, or charge by phone at 1-800-745-3000.

WEATHER

- Events are rain or shine
- ASM Global has authority to suspend or cancel an event due to dangerous conditions

PREFERRED RIGGING CREW

- Rhino Louisiana, LLC
Ray Cullen: 255-644-5600
ray@rhinostaging.com

STAFFING

- ASM Global is the sole provider of the Security, Police, Fire, Medical Services, Housekeeping, Ticket Scanners, Ticket Sellers, Ushers and House Craftsmen Personnel

EQUIPMENT

- Staging, Concert Barricades, Bicycle Rack, Chairs, Tables. Equipment is available based on inventory

ADDITIONAL INFO

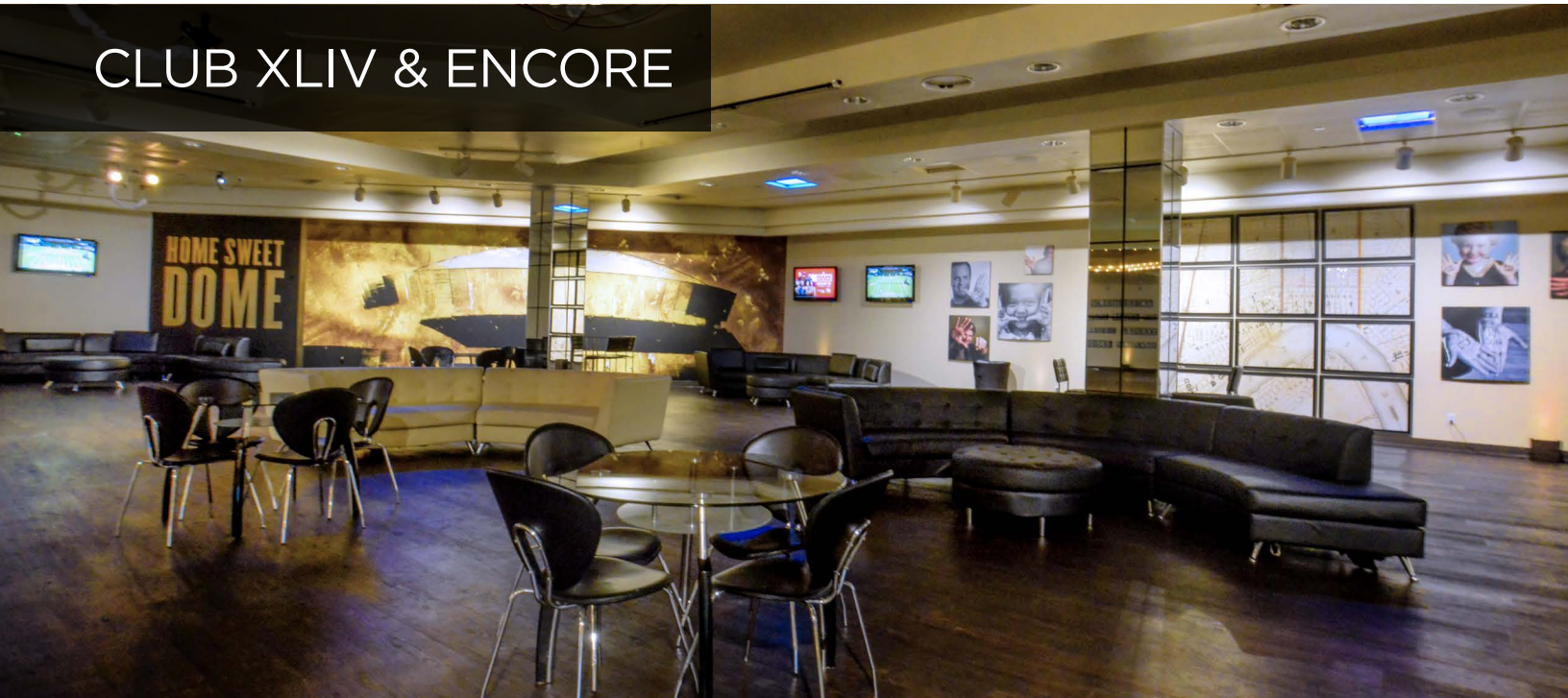
- Licensee will be responsible for all city and applicable permits

IT INFORMATION

- Champions Square is fully WiFi & cellular equipped. Any additional telecom or data services can be requested from AT&T, toll-free at 1-866-620-6000

ANCILLARY SPACES

CLUB XLIV & ENCORE



SPACE / CAPACITIES

- club XLIV: 9,500 sq. ft.
 - 550 reception / 200 seated
- Encore: 8,400 sq. ft.
 - 450 reception / 300 seated
- Total: 17,900 sq. ft.
 - 1,000 reception / 500 seated

CLUB XLIV FURNISHINGS & FIXTURES

- Two fixed bars
- Nine black and ivory leather sofas
- Nine highboys with 27 black leather barstools
- Twenty-three 42 inch tables with 92 black leather chairs
- New Orleans inspired artwork throughout the space
- Specialty audio, video and lighting packages

CLUB XLIV LIGHTING

- LED color up-lights around the perimeter of the room
- Customizable gobo locations: two floor projections (one at each entrance). Associated fees apply for creation of custom gobos
- Eight dimmable chandeliers
- Three rows of five dimmable, modern crystal chandeliers

CLUB XLIV AUDIO

- Full range audio system with speakers recessed in the ceiling throughout the space

- 16-channel mixing console with the ability to include microphones, iPod or other MP3 player
- Sound for LED televisions can be played throughout the in-house sound system

CLUB XLIV VIDEO

- Nine 42 in. LED televisions located throughout the club with HDTV capabilities and Cox Cable TV channels
- 3,000 lumen projector with Cox Cable TV channels projects onto a 10 ft. x 12 ft. screen. A laptop may be attached to the projector for customized videos, presentations, etc.

ENCORE

- Customizable for any special occasion
- Connected to club XLIV by impressive, oversized sliding doors
- Space may be utilized only in conjunction with rental of club XLIV
- Separate entrance located at Girod Street
- Thirteen dimmable chandeliers

CATERING

- ASM Global's in-house caterer, Centerplate, retains the sole right to provide all beverage service

- Client may utilize ASM Global's in-house caterer for food service or Client may opt to bring in an outside caterer of their choice
 - A per person catering buyout fee/minimum will apply
 - Caterers must be approved by ASM Global

RESTROOMS IN LOBBY AREA

- Men's restrooms: 12 facilities
- Women's restrooms: 12 facilities

ENTRANCES

- Champions Square entrance (may be used based on availability but cannot be confirmed more than 30 days prior to event)
- Encore entrance at Girod Street

PARKING / BUS DROP-OFF

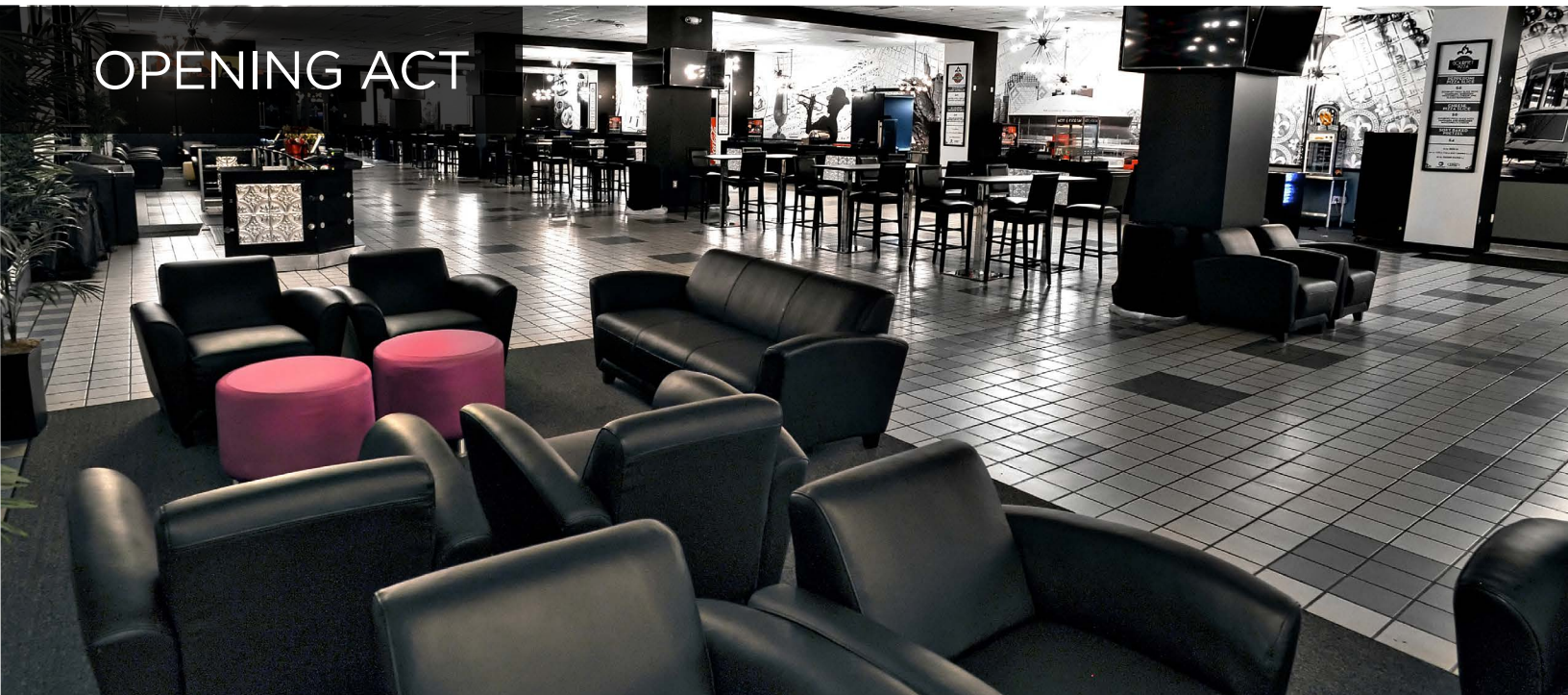
- Convenient and accessible parking in close proximity offered at competitive rates
- Buses may access LaSalle Street and drop guests off directly at Champions Square (based on availability). If Champions Square is unavailable, buses may drop off at the Encore entrance located at Girod Street

EXCLUSIVES

- ASM Global is the exclusive operator of all existing audio and video equipment
- ASM Global Event Staff
- Centerplate is the exclusive beverage provider

ANCILLARY SPACES

OPENING ACT



SPACE/CAPACITIES

- May be rented only in conjunction with Champions Square
- Total Square Footage: 12,000
- Capacity: 650 Reception
- Existing Lounge Seating for 145

FURNISHINGS & FIXTURES

- One extra-long fixed bar
- 4 fixed food service areas with 8 service points
- 4 black leather couches and 41 black leather chairs
- 12 ottomans
- 12 rectangular community style high boys with 48 barstools
- 6 aluminum high boys with 36 barstools
- 12 high boys with 36 leather barstools
- 6 mesh table with 24 barstools
- 29 starburst light fixtures throughout the space
- Custom New Orleans-inspired artwork throughout the space

AUDIO & VIDEO

- Seven 60" flat screen televisions
- Twenty four 42" flat screen televisions with the ability to display live video feed from

Champions Square, image slideshows and video presentations

- 16-channel mixing console with the ability to include microphones, iPod or other MP3 player
- Wireless microphones and communications systems
- Full range audio system with speakers recessed in the ceiling throughout the space

CATERING & CONCESSIONS

- ASM Global's in-house caterer, Centerplate, retains the sole right to provide all beverage service
- Client may utilize ASM Global's in-house caterer for food service or Client may opt to bring in an outside caterer of their choice. A per-person catering buyout fee/minimum will apply
- Centerplate is the exclusive cash sales concessionaire

ENTRANCES

- Champions Square entrance (may be used based on availability but cannot be confirmed more than 30 days prior to event)
- Entrance on South LaSalle

RESTROOMS

- Mens restrooms: 4 facilities
- Womens restrooms: 4 facilities

SPONSORS

- Sponsorship rights vary based upon event type. Please speak with the ASM Global Sales Department

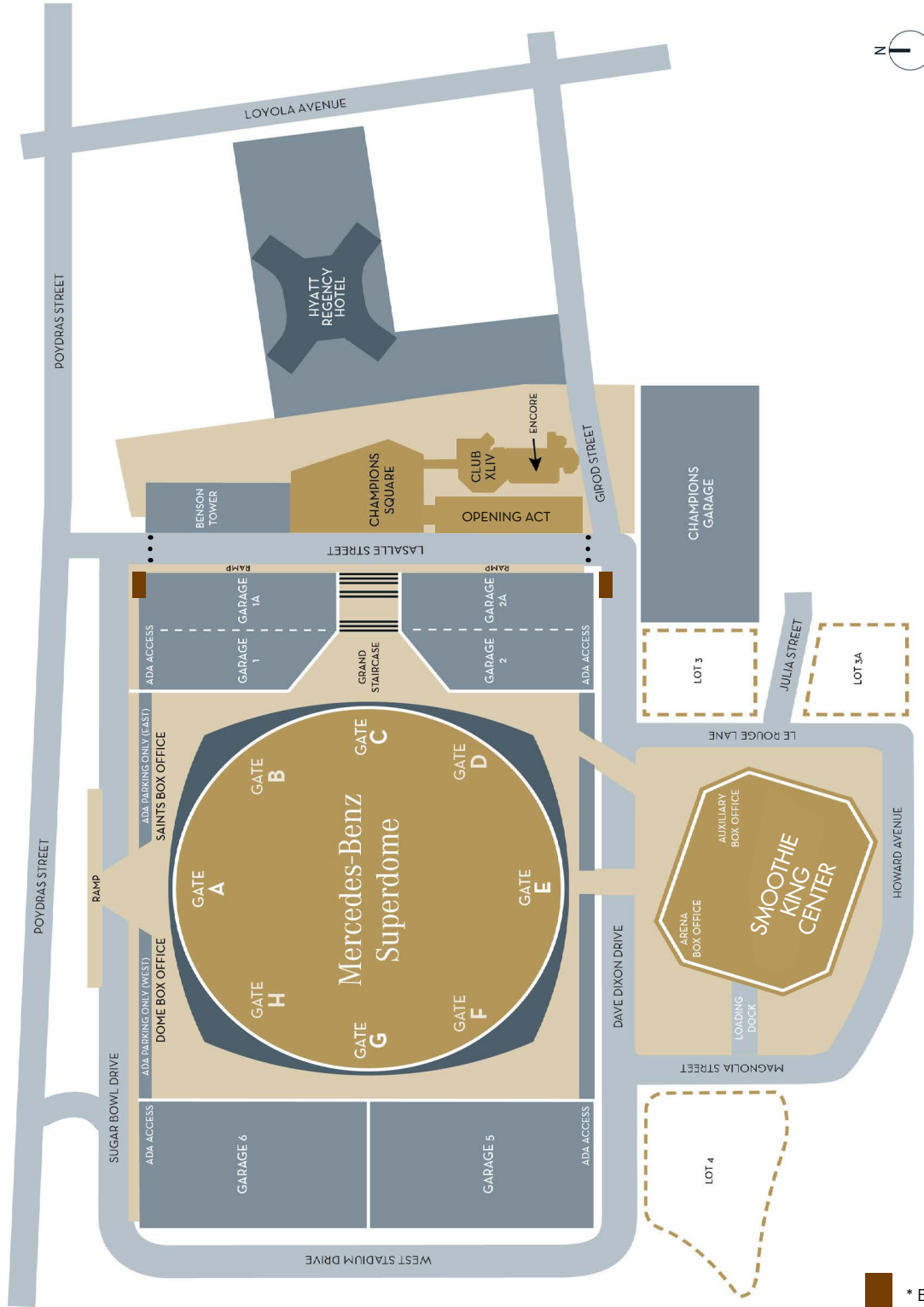
PARKING / BUS DROP-OFF

- Convenient and accessible parking in close proximity offered at competitive rates
- On-site lots for parking/staging of oversized vehicles (based on availability)
- Buses may access LaSalle St. and drop guests off directly in Champions Square (based on availability)

EXCLUSIVES

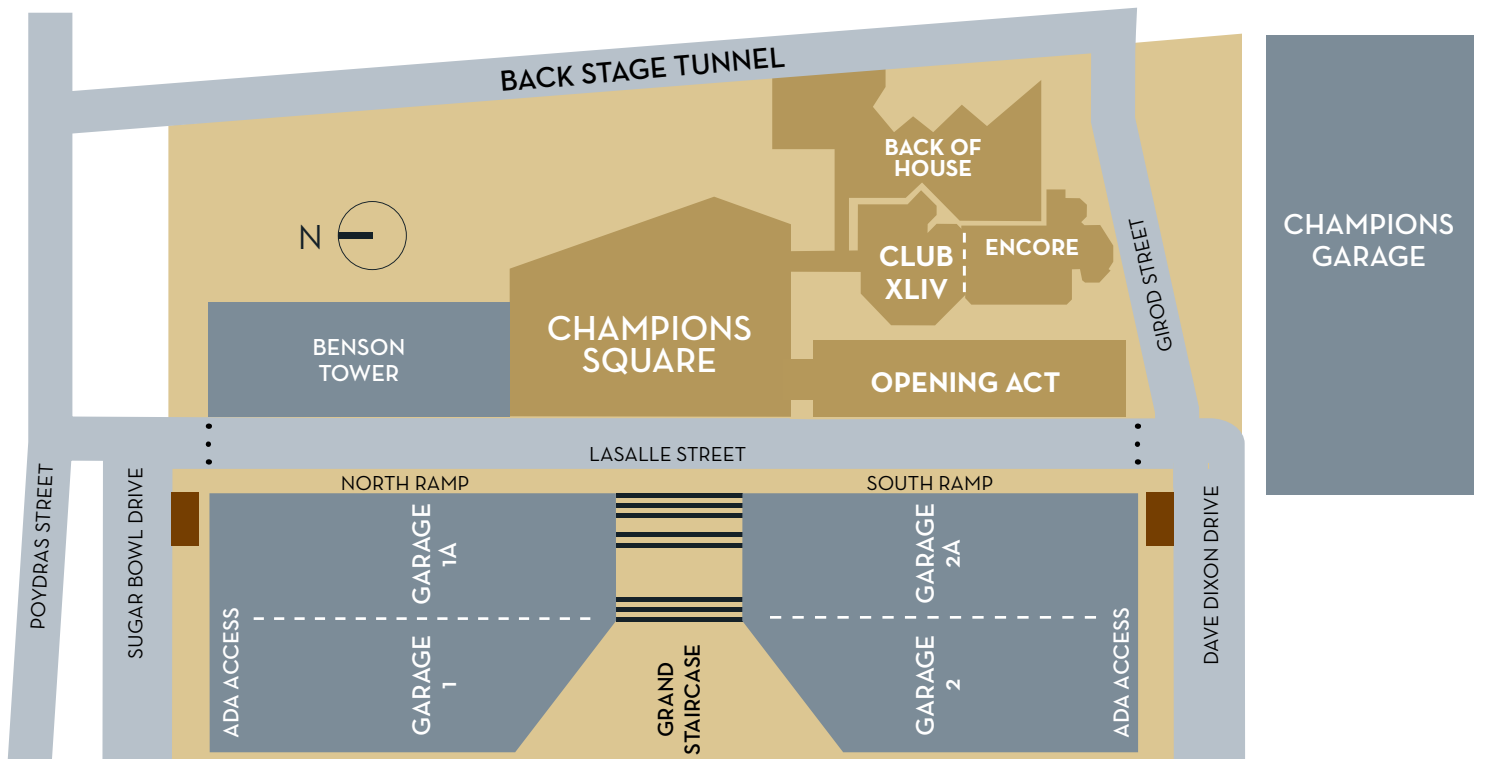
- Medical Services and ASM Global Event Staff
- Certain product, messaging, sponsor signage and pouring rights apply
- ASM Global event staff is the exclusive operator of all existing audio and video equipment
- Centerplate is the exclusive beverage provider

SITE MAP



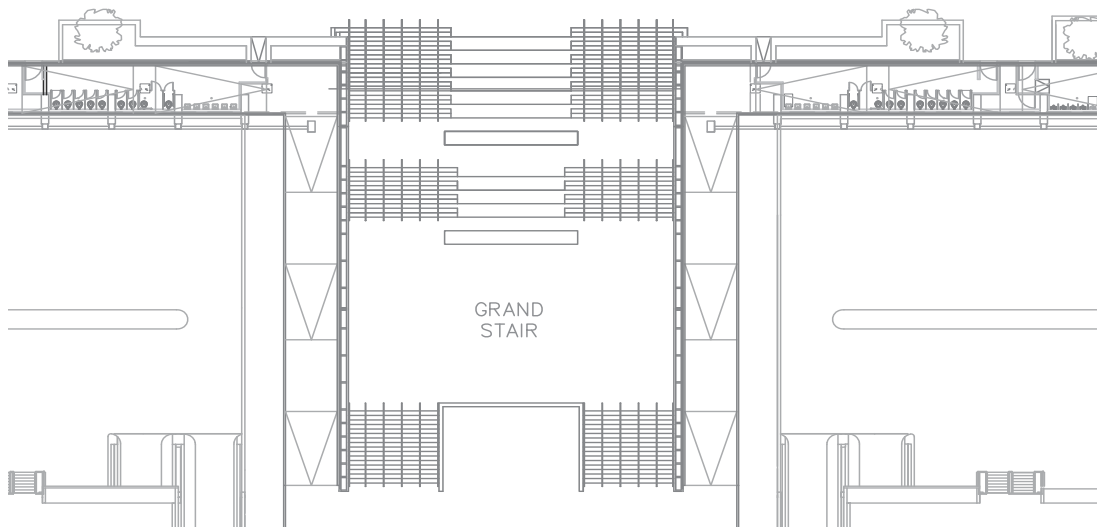
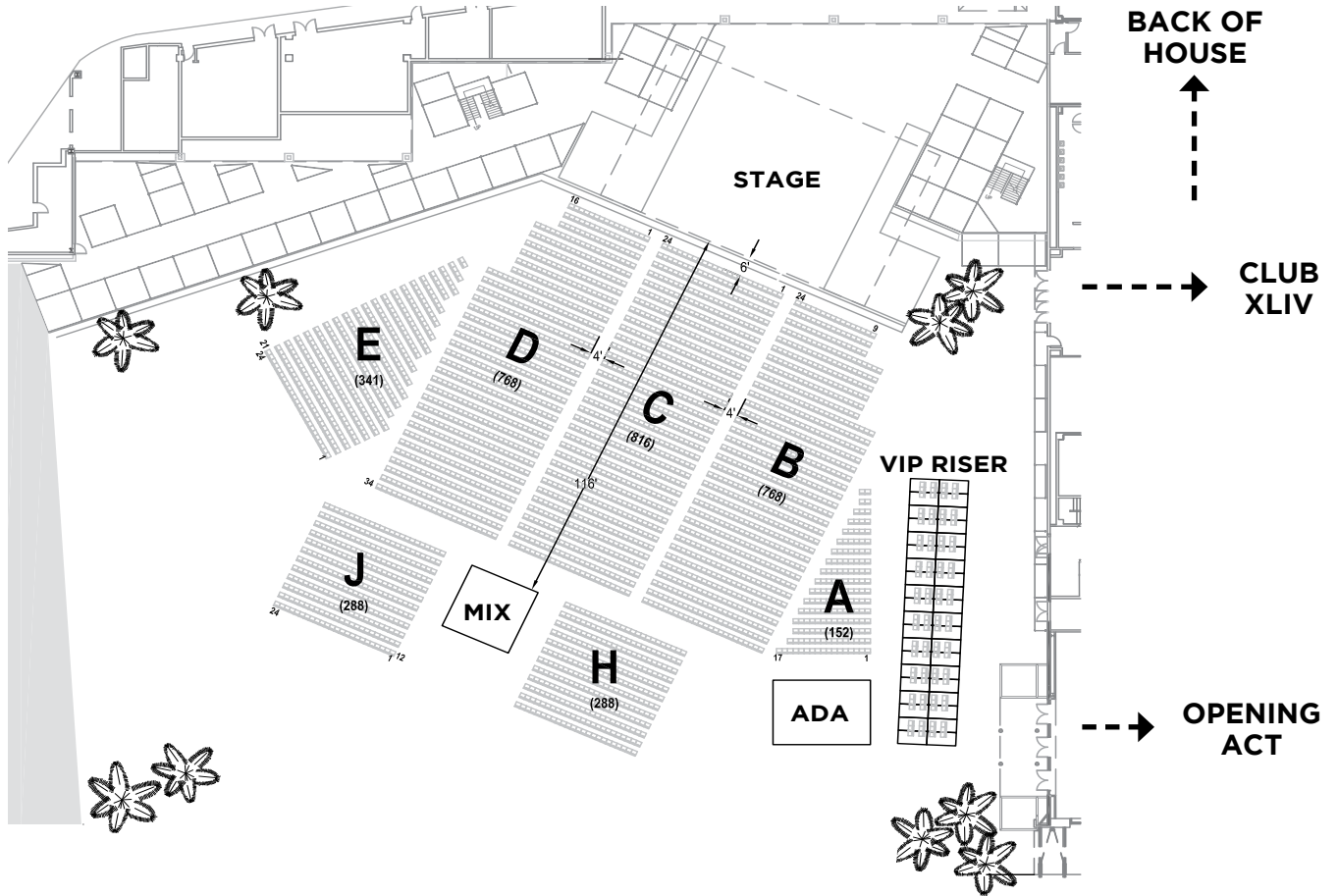
 * BOX OFFICE ON DAY OF SHOW

SITE MAP



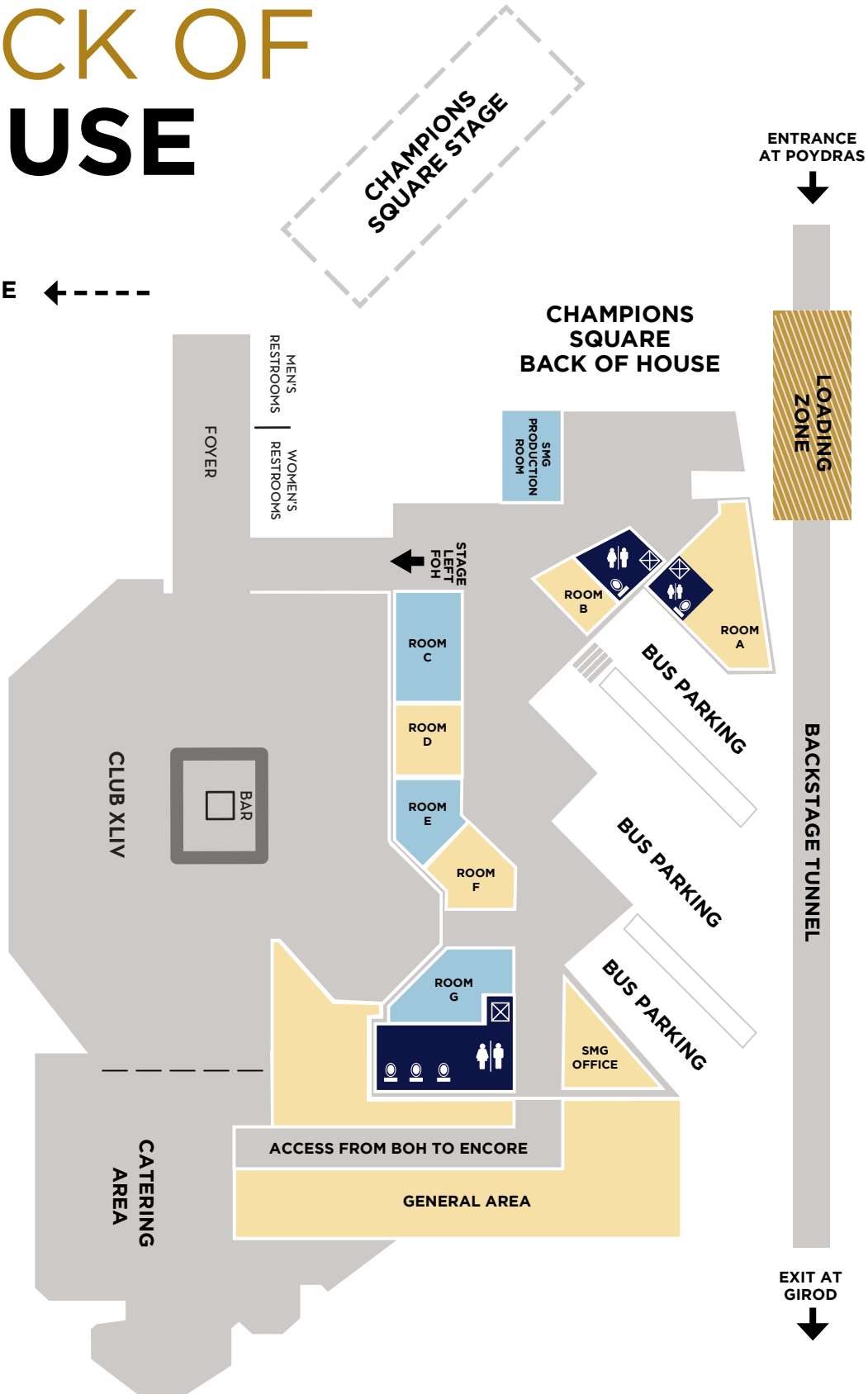
* BOX OFFICE ON DAY OF SHOW

SEATED CONCERT



BACK OF HOUSE

SUPERDOME ← - - - -



DRESSING ROOM BACKSTAGE AREA

ROOM A
220 sq ft.

ROOM A - BATHROOM
82 sq ft.

ROOM B
72 sq ft.

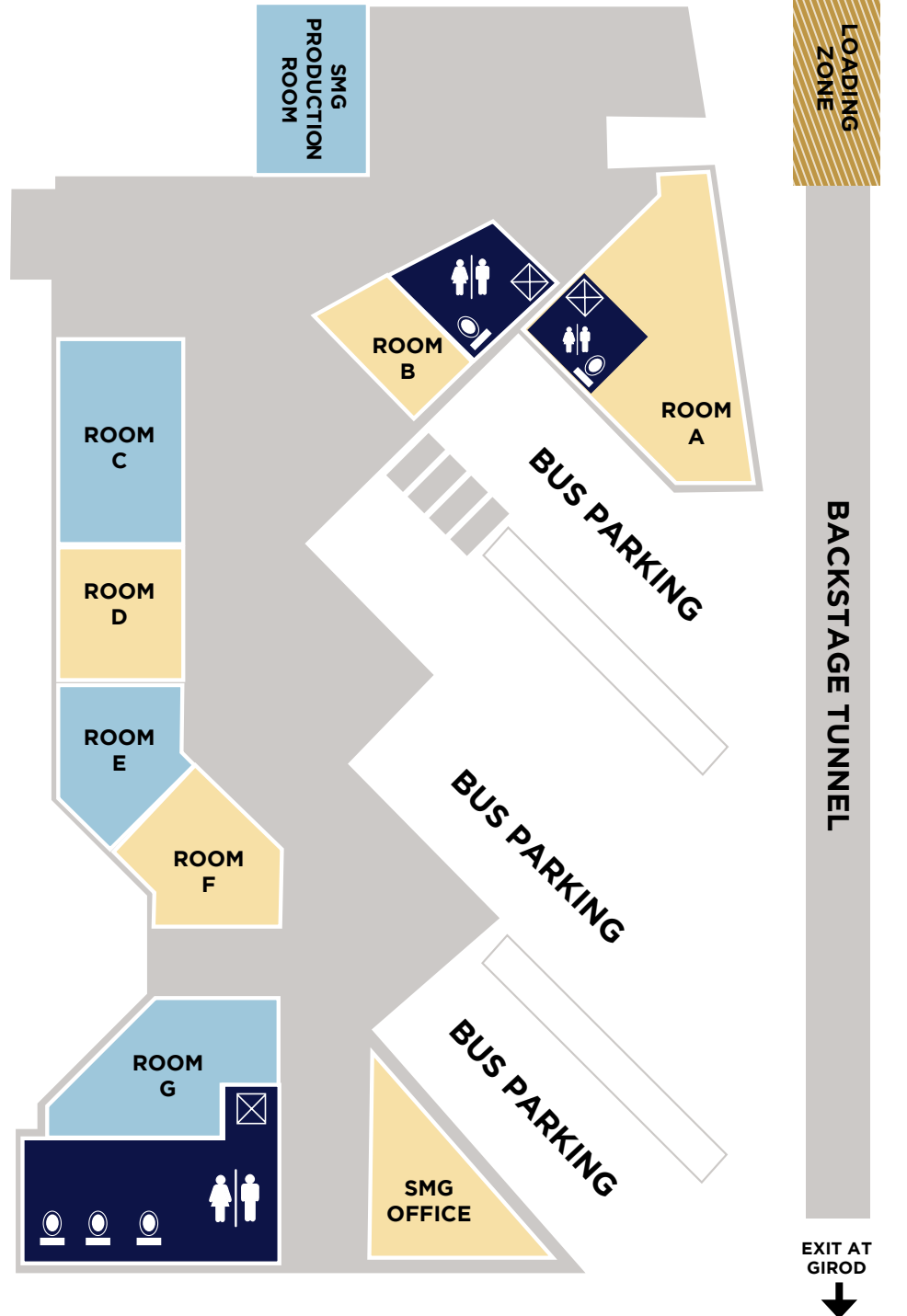
ROOM C
194 sq ft.

ROOM D
129 sq ft.

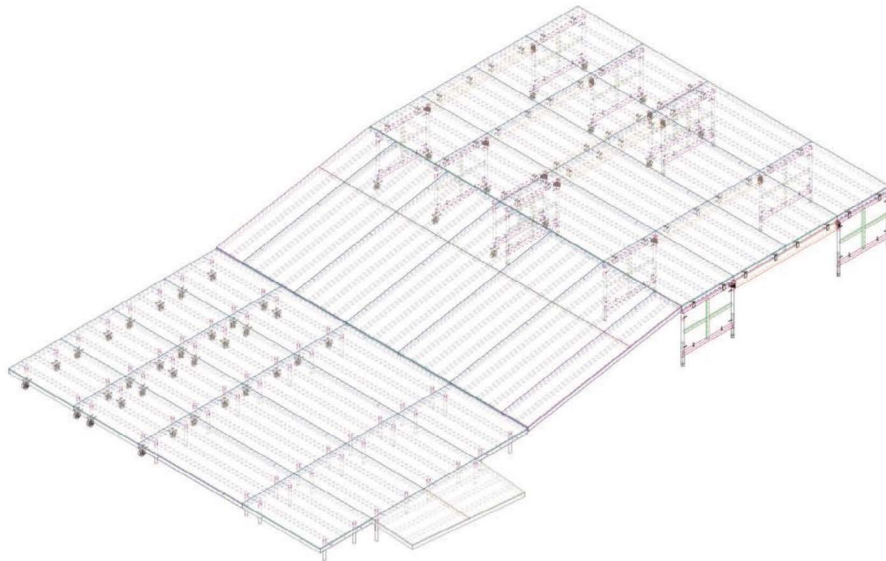
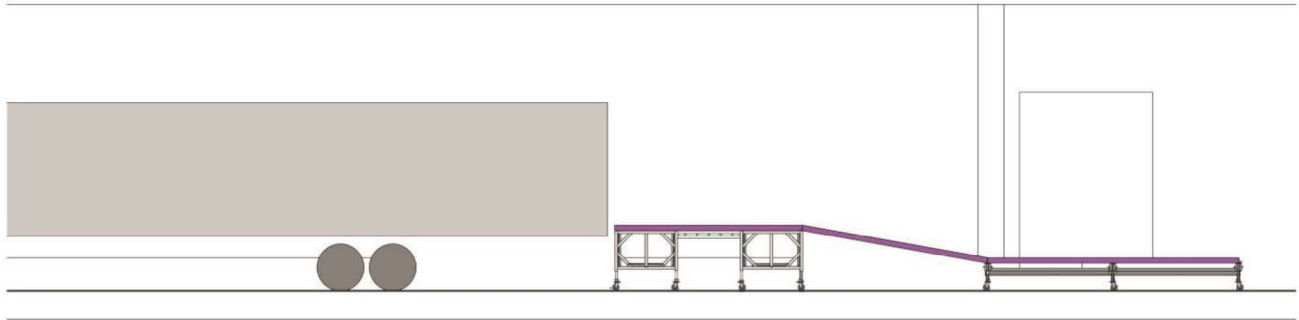
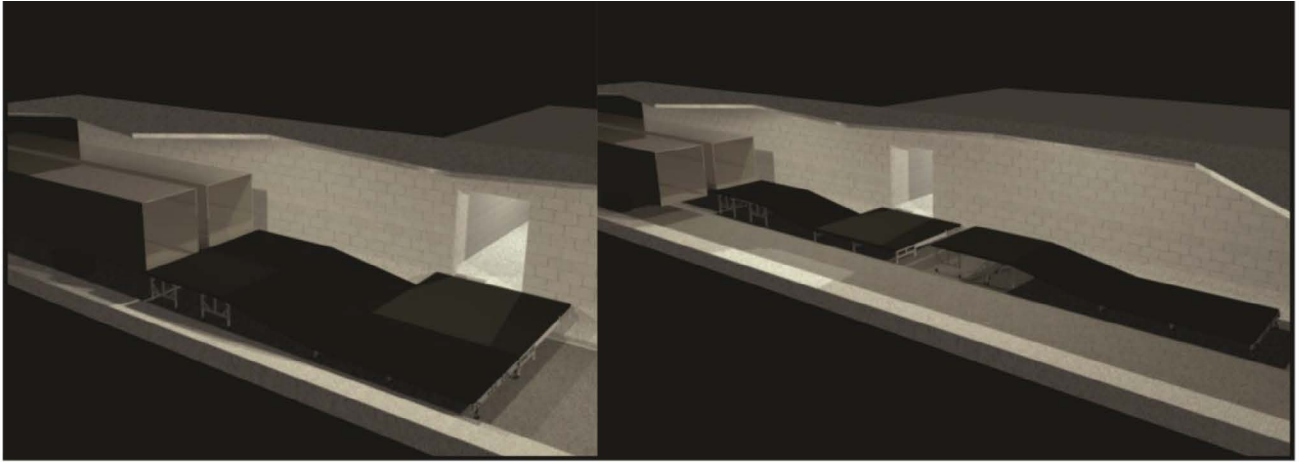
ROOM E
137 sq ft.

ROOM F
138 sq ft.

ROOM G
175 sq ft.



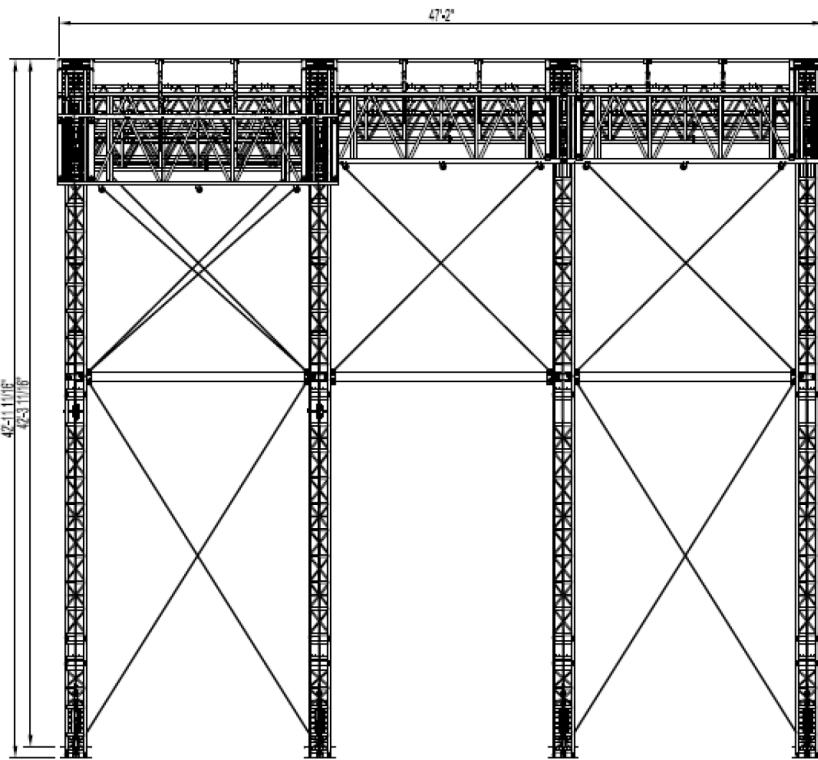
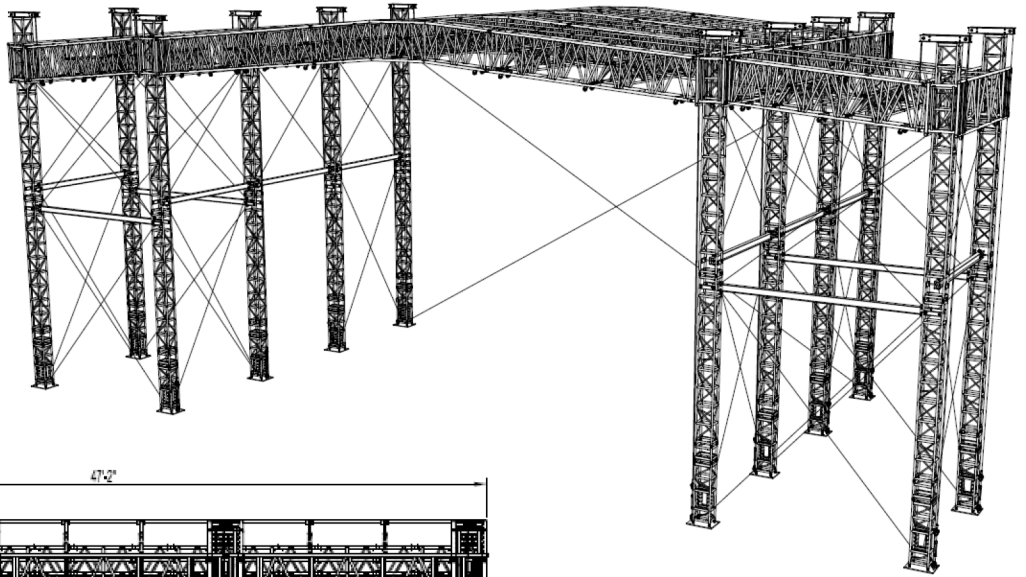
LOADING ZONE DIAGRAM



ROOF & RIGGING INFO

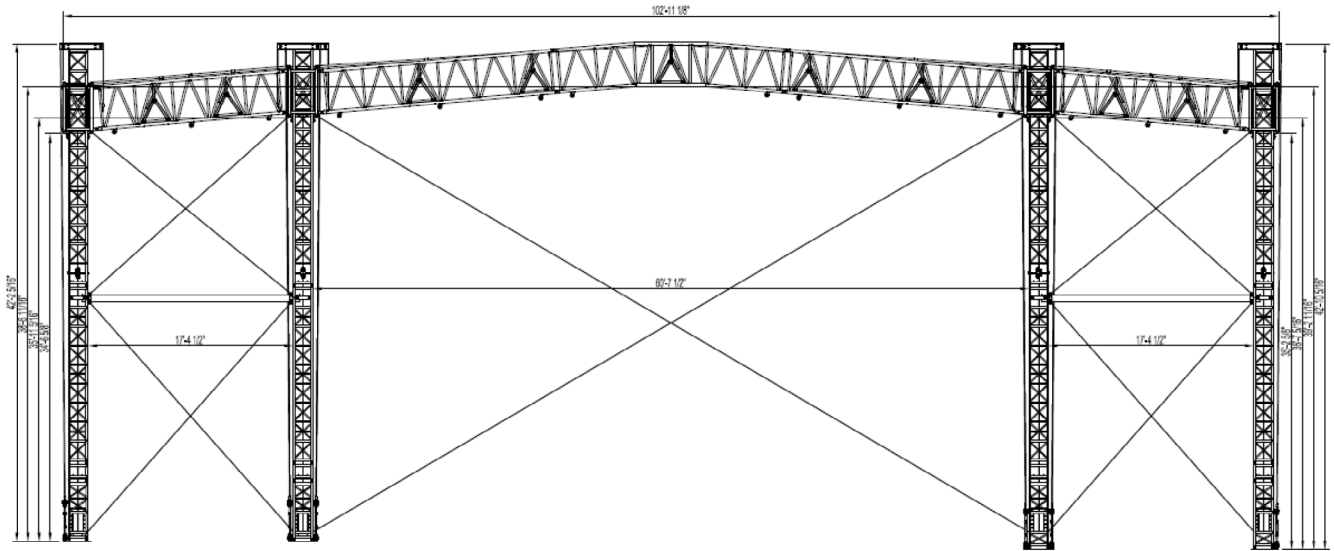
ROOF

- Type: Tomcat BFT
- Main grid: 65' x 48'
48,000 lbs total weight
- Audio Bays: 19' x 17'
10,000 lbs on each side

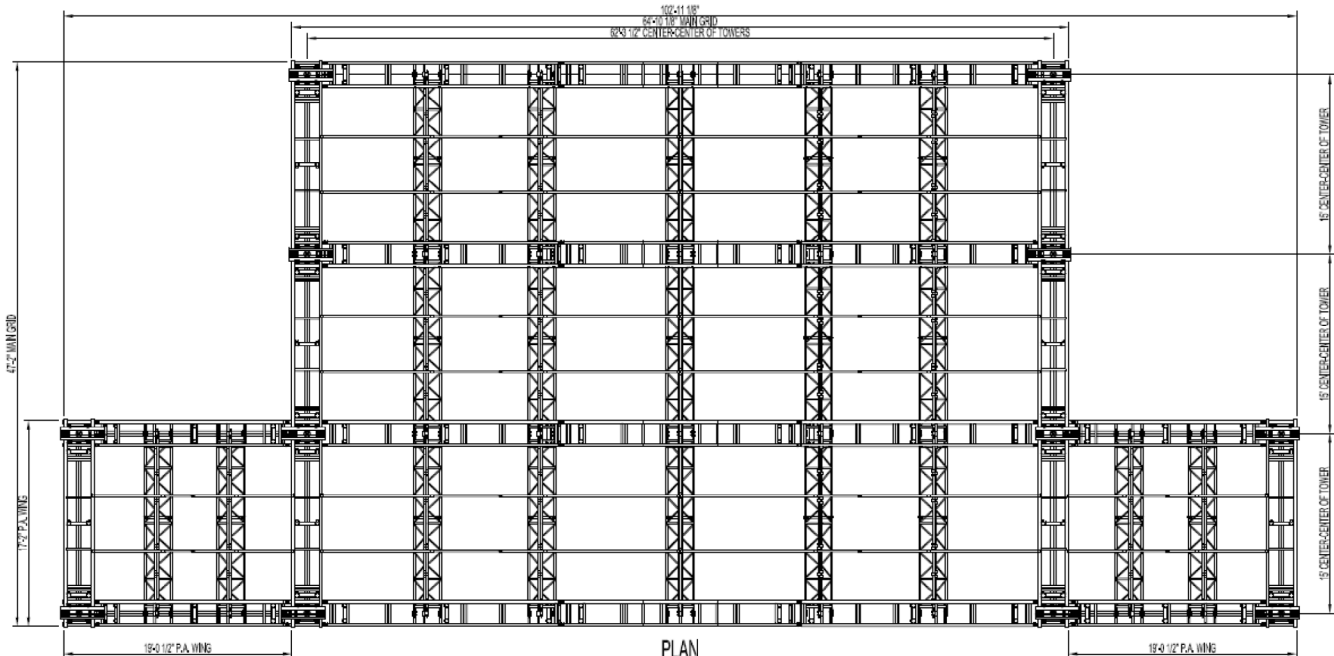


END

ROOF & RIGGING INFO

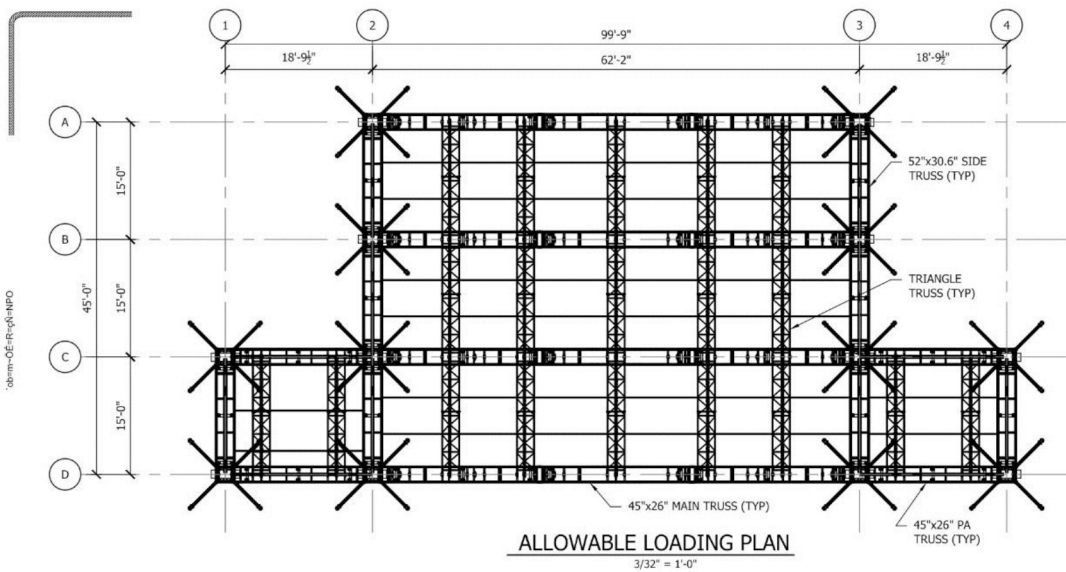


ELEVATION



PLAN

ROOF & RIGGING INFO



ALLOWABLE LOADING GUIDELINES

1. EACH LOAD INDICATED IN THE ALLOWABLE LOADING PLAN IS INDEPENDENT OF THE OTHER LOADS AND IS NOT ADDITIVE TO ANY OTHER LOAD.
2. CARE SHOULD BE TAKEN WHEN APPLYING LOADS AS LOADING OF ONE TRUSS MAY INDUCE LOAD ON ANOTHER TRUSS RESULTING IN AN OVERLOAD SITUATION.
3. THE UNIFORMLY DISTRIBUTED LOAD IS ONLY APPLICABLE IF THE LOAD IS APPLIED EVENLY OVER THE ENTIRE LENGTH OF THE TRUSS.
4. SELFWEIGHT OF THE TRUSS HAS BEEN INCLUDED IN THE CALCULATION OF THE ALLOWABLE LOADS.
5. ALL LOADS SHALL BE APPLIED AT TRUSS PANEL POINTS ONLY, I.E. INTERSECTION OF DIAGONAL AND CHORD OR VERTICAL AND CHORD.
6. BRIGLES ARE NOT PERMITTED UNLESS APPROVED IN WRITING BY THE ENGINEER OF RECORD.
7. ALLOWABLE LOADS INDICATED ARE FOR GENERAL GUIDANCE ONLY. ALL RIGGING PLOTS SHOULD BE EVALUATED BY A LICENSED STRUCTURAL ENGINEER PRIOR TO HANGING ANY RIGGING LOADS.
8. NO DYNAMIC OR SHOCK LOADS HAVE BEEN TAKEN INTO ACCOUNT.
9. TOTAL LIVE LOAD (IN ADDITION TO ROOF AND CHAIN HOIST SELF WEIGHT) APPLIED TO ANY TOWER MAY NOT EXCEED 12,000 POUNDS.

ALLOWABLE TRUSS LOAD TABLES (DEAD HANG)

DESCRIPTION	UNIFORMLY DISTRIBUTED LOAD	CENTER POINT LOAD	THIRD POINT LOAD	QUARTER POINT LOAD
45"x26" MAIN TRUSS	12,000#	6,000#	5,000#	3,000#
45"x26" PA TRUSS	12,000#	6,000#	5,000#	3,000#
TRIANGLE TRUSS	500 plf	4,000#	3,000#	2,200#
52"x30.6" SIDE TRUSS	12,000#	6,000#	5,000#	3,000#

CLARK POLDER
ENGINEERING

4820 Business Center Way
Cincinnati, OH 45248
513 851 1223

COPYRIGHT © 2012
THE ENGINEER IS THE PROPERTY AND COLLATERAL PROPERTY OF CLARK POLDER ENGINEERING, INC. NO OTHER USE, REPRODUCTION, OR DISTRIBUTION OF THIS DOCUMENT OR ITS CONTENTS IS PERMITTED WITHOUT THE WRITTEN CONSENT OF CLARK POLDER ENGINEERING, INC.

**CHAMPIONS SQUARE
ROOF SYSTEM**

NEW ORLEANS, LA
TOMCAT USA

REVISION DESCRIPTION - DATE

DATE:	05/06/2013
PROJECT NO.:	13-411-01
DRAWN BY:	JMR / TWL

ALLOWABLE LOADING PLAN

S1.1



CHAMPIONS SQUARE CONCERT SERIES

In early Spring of 2014, an exciting new concert series was announced for New Orleans and Champions Square. Structured as a joint venture between ASM Global, Live Nation, and Bold Sphere Music, this series showcases national touring talent spanning the entire music spectrum — from country, to hip hop, to classic rock, to up-and-coming stars from all genres. In order to attract the desired “A List” talent to the Champions Square Concert Series, a state of the art stage/rigging roof, and dressing room facilities were constructed.

RULES FOR OUTSIDE PROMOTERS

The contractual arrangement between ASM Global and Live Nation allows for open access to Champions Square by all promoters. However, in consideration of a substantial financial investment on their part, Live Nation has been granted certain rights relative to all national touring music shows. Outlined below are the basic terms and conditions for third party promoters’ use of Champions Square.

BASIC USE TERMS

- Rent - \$32,000 for a three (3) hour show with one hour doors. Additional rental fee of \$750 for each additional 15 minute increment. Rent includes venue set-up, basic show staffing, housekeeping and first aid. Entry security (i.e. magnetometers and bag checks), event permit, and all production/rider expenses are not included.
- Curfew - (a) Sunday-Thursday - 10:30PM; (b) Friday-Saturday - 11:00 PM
- Box Office - 3% of gross ticket receipts, after taxes, capped at \$3,000. Champions Square ticketing is serviced by Ticketmaster.
- Tax - Ticket receipts for Champions Square events will be taxed at the prevailing state and local sales tax rates. Currently the combined tax rate is 9.45%.
- Facility Ticket Fee - There is a \$4.00 per ticket surcharge on all paid tickets.
- Capacity - Since there is no fixed seating, configuration and capacities are flexible. The maximum reserved seating capacity is 4,600, and general admission or festival style is approximately 8,500. Many shows use a combination of reserved and GA seating.
- Sponsorships - Promoters/shows may secure and display ground supported sponsor signage and activations that do not conflict with the naming rights sponsors of the Mercedes-Benz Superdome, Smoothie King Center, and Champions Square. All permanent Champions Square sponsor signage and activations will remain in place.
- Other - There will be a maximum noise level. This is currently going through the legislative process but we anticipate it will be 105 decibels, c-weighted, measured from the mix location.

CONCERT SERIES GUIDELINES

The specific Concert Series guidelines are as follows:

- All touring concerts will be promoted under the banner of the Champions Square Concert Series. The Concert Series will likely have a title sponsor which may be presented as “Sponsor Name Live at Champions Square” or something similar. This designation must be used on the ticket header, and in all advertising and promotions for all touring live music performances.
- Live Nation has been granted the right to market Concert Series sponsorships. The Concert Series sponsors will be allowed to display their ground-supported signage at all touring concert presentations.
- Live Nation has been granted the right to market Concert Series season VIP tickets. These VIP tickets will not be included on the show manifest. The number of VIP tickets will not exceed 200. VIP season subscribers and Concert Series sponsors will also have access to the adjoining club XLIV.

